

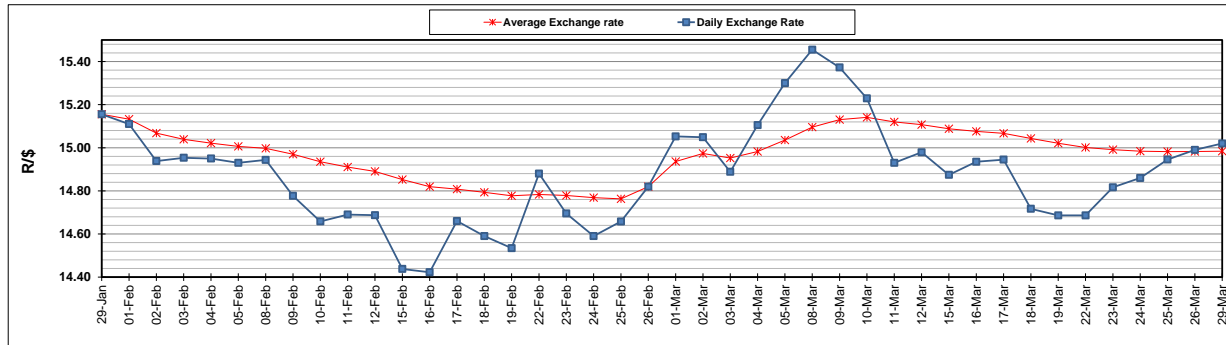
| | PETROL 95 ULP | PETROL 93 ULP & LRP | DIESEL 0.05% | DIESEL 0.005% | ILL. PAR. |
|--|------------------|------------------------|-----------------|------------------|-----------|
| GAUTENG PUMP PRICE (SA c/l) AS FROM 03/03/2021 | 1,632.000 | 1,615.000 | - | - | - |
| WHOLESALE PRICE (SA c/l) AS FROM 03/03/2021 | - | - | 1,412.420 | 1,416.820 | 845.688 |
| SINGLE NATIONAL MAXIMUM RETAIL PRICE | - | - | - | - | 1,071.000 |
| BASIC FUEL PRICE - 29/03/2021 (SA c/l) | 724.613 | 710.837 | 655.175 | 657.628 | 636.407 |
| PRESS RELEASE CONTRIBUTION TO BFP 03/03/2021 - 29/03/2021 (SA c/l) | 665.170 | 658.170 | 653.630 | 658.030 | 633.128 |
| UNIT OVER/(UNDER) RECOVERY - 29/03/2021 (SA c/l) | (59.443) | (52.667) | (1.545) | 0.402 | (3.279) |
| AVERAGE BASIC FUEL PRICE 26/02/2021 - 29/03/2021 | 729.113 | 717.311 | 685.152 | 687.861 | 663.093 |
| AVERAGE UNIT OVER/(UNDER) RECOVERY 26/02/2021 - 29/03/2021 | (72.807) | (68.005) | (38.886) | (37.467) | (36.374) |

ANALYSIS MOVEMENT OF AVERAGE OVER/(UNDER) RECOVERY

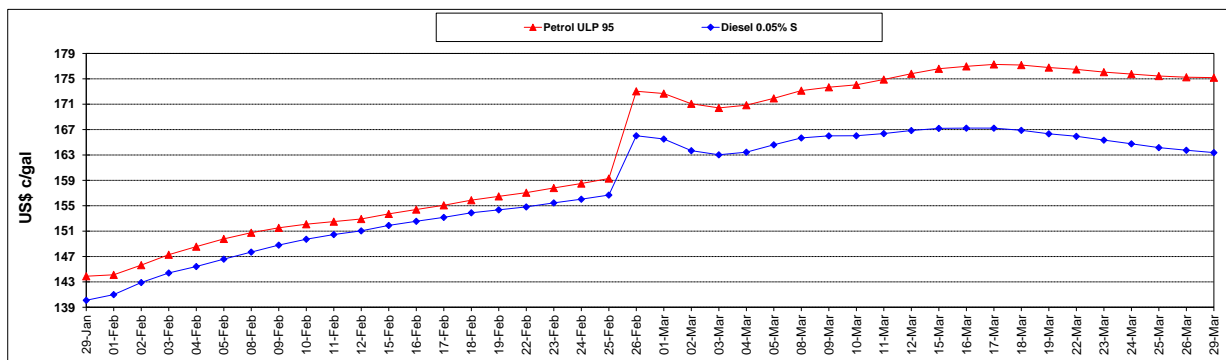
| | PETROL 95 | PETROL 93 | DIESEL 0.05% | DIESEL 0.005% | ILL. PAR. |
|--|-----------|-----------|--------------|---------------|-----------|
| - MOVEMENT IN INTERNATIONAL PRODUCT PRICES | (62.039) | (57.411) | (28.767) | (27.308) | (26.581) |
| - MOVEMENT IN EXCHANGE RATE | (10.768) | (10.594) | (10.119) | (10.159) | (9.793) |
| AVERAGE UNIT OVER/(UNDER) RECOVERY 26/02/2021 - 29/03/2021 | (72.807) | (68.005) | (38.886) | (37.467) | (36.374) |

R/\$ EXCHANGE RATE - (R/\$15.0200 - 29/03/2021)

EXCHANGE RATE USED IN BASIC FUEL PRICE



INTERNATIONAL PRODUCT PRICES OF BASKET USED IN BASIC FUEL PRICE



BASIC FUEL PRICE IN SA CENTS PER LITRE

